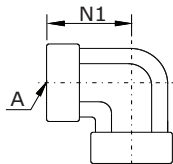


ADAPTADORES - SAE J514

JOELHO FÊMEA NPT (Female Thread Elbow)

140238.....

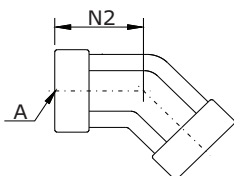


Ref.	Rosca A NPT (2x)	N1
140238-2-2 C	1/8	17
140238-4-4 C	1/4	22
140238-6-6 C	3/8	26
140238-8-8 C	1/2	31
140238-12-12 C	3/4	35
140238-16-16 C	1	41
140238-20-20 C	1.1/4	43
140238-24-24 C	1.1/2	53
140238-32-32 C	2	61

Adaptador com ref. em Aço Carbono (C)

CURVA FÊMEA NPT (Female Thread 45° Elbow)

140338.....

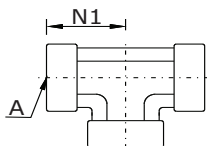


Ref.	Rosca A NPT (2x)	N 2
140338-2-2 C	1/8	13
140338-4-4 C	1/4	18
140338-6-6 C	3/8	19
140338-8-8 C	1/2	24
140338-12-12 C	3/4	25
140338-16-16 C	1	30
140338-20-20 C	1.1/4	37
140338-24-24 C	1.1/2	37
140338-32-32 C	2	40

Adaptador com ref. em Aço Carbono (C)

TE FÊMEA NPT (Female Thread Tee)

140438.....

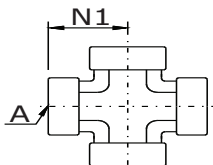


Ref.	Rosca A NPT (2x)	N1
140438-2-2-2 C	1/8	17
140438-4-4-4 C	1/4	22
140438-6-6-6 C	3/8	26
140438-8-8-8 C	1/2	31
140438-12-12-12 C	3/4	35
140438-16-16-16 C	1	41
140438-20-20-20 C	1.1/4	43
140438-24-24-24 C	1.1/2	53
140438-32-32-32 C	2	61

Adaptador com ref. em Aço Carbono (C)

CRUZETA FÊMEA NPT (Female Thread Cross)

140538.....



Ref.	Rosca A NPT (2x)	N1
140538-2-2-2-2 C	1/8	17
140538-4-4-4-4 C	1/4	22
140538-6-6-6-6 C	3/8	26
140538-8-8-8-8 C	1/2	31
140538-12-12-12-12 C	3/4	35
140538-16-16-16-16 C	1	41
140538-20-20-20-20 C	1.1/4	43
140538-24-24-24-24 C	1.1/2	53
140538-32-32-32-32 C	2	61

Adaptador com ref. em Aço Carbono (C)

1 - Materiais dos Adaptadores: **Aço Inoxidável (S) = 140238-8-8 S**
140338-8-8 S
140438-8-8-8 C
140538-8-8-8-8 C