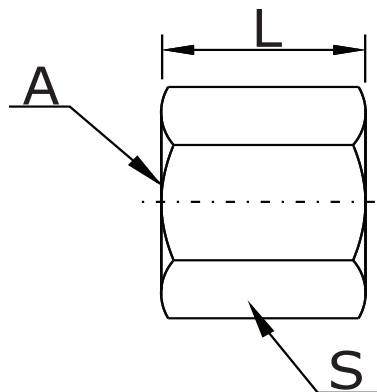


CONEXÕES SAE - JIC (ISO 8434-2 / SAE J514)



**Porca
(Nut)
070110.....**



Ref.	Tubo	Rosca A UNF	L	S
070110-4 C	1/4	7/16-20	16	9/16
070110-5 C	5/16	1/2-20	17	5/8
070110-6 C	3/8	9/16-18	18	11/16
070110-8 C	1/2	3/4-16	22	7/8
070110-10 C	5/8	7/8-14	25	1.1/16
070110-12 C	3/4	1.1/16-12	26	1.1/4
070110-14 C	7/8	1.3/16-12	28	1.3/8
070110-16 C	1	1.5/16-12	29	1.1/2
070110-20 C	1.1/4	1.5/8-12	31	2
070110-24 C	1.1/2	1.7/8-12	36	2.1/4
070110-32 C	2	2.1/2-12	45	3

Porca com ref. em Aço Carbono (C)

1 - Materiais das Porcas: **Aço Inoxidável (S) = 070110-8 S**
Latão (B) = 070110-8 B

2 - Consulte para porcas com tubos métricos (mm).